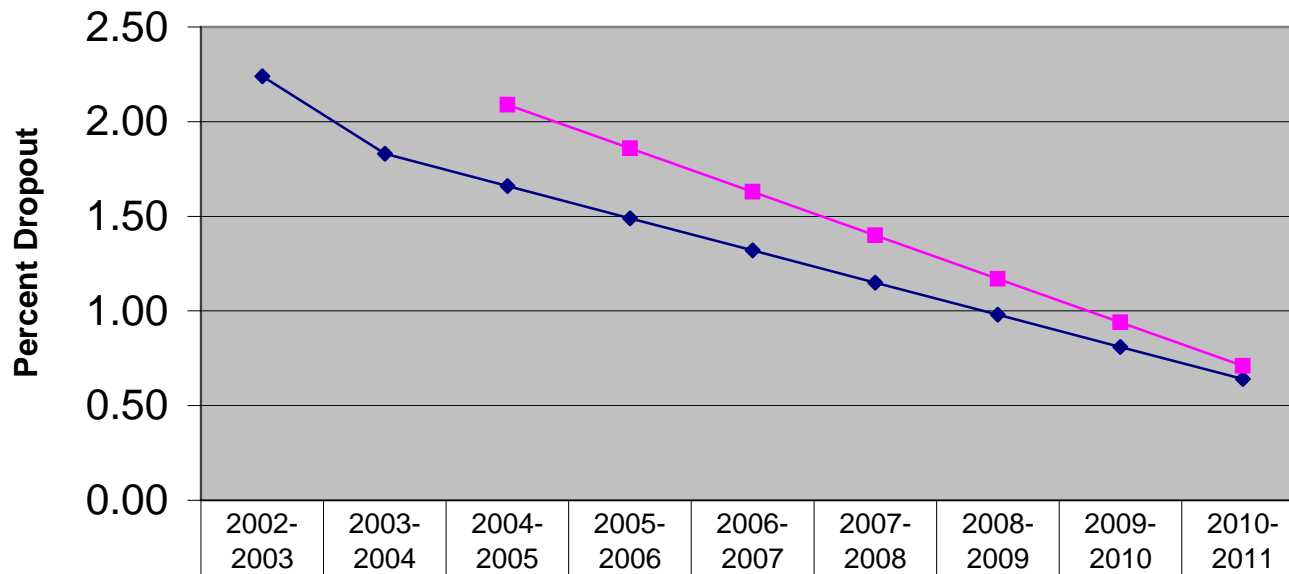


Target Type

	2002-2003 Based Targets	2004-2005 Baseline Data
2002-2003	2.24	
2003-2004	1.83	
2004-2005	1.66	2.09
2005-2006	1.49	1.86
2006-2007	1.32	1.63
2007-2008	1.15	1.40
2008-2009	0.98	1.17
2009-2010	0.81	0.94
2010-2011	0.64	0.71

Dropout Rate Target Comparison
 2002-2003 Based Targets vs. 2004-2005 Baseline Data

—◆— 2002-2003 Based Targets —■— 2004-2005 Baseline Data



—◆— 2002-2003 Based Targets	2.24	1.83	1.66	1.49	1.32	1.15	0.98	0.81	0.64
—■— 2004-2005 Baseline Data			2.09	1.86	1.63	1.40	1.17	0.94	0.71